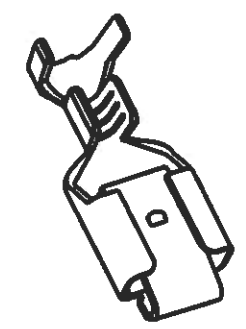


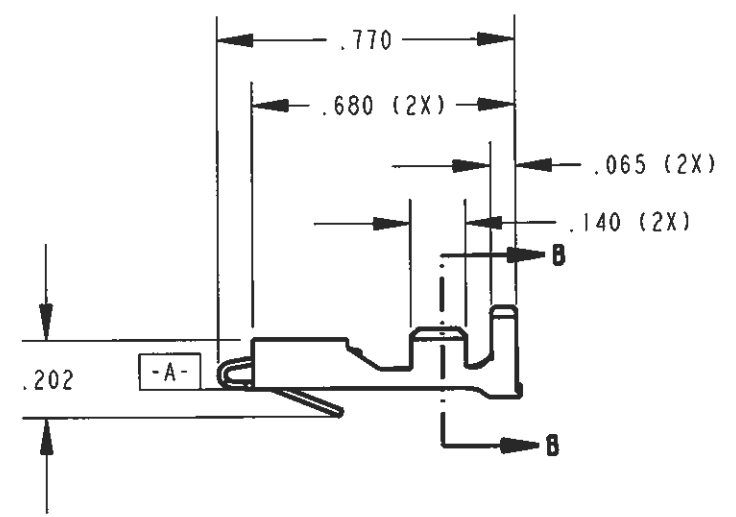
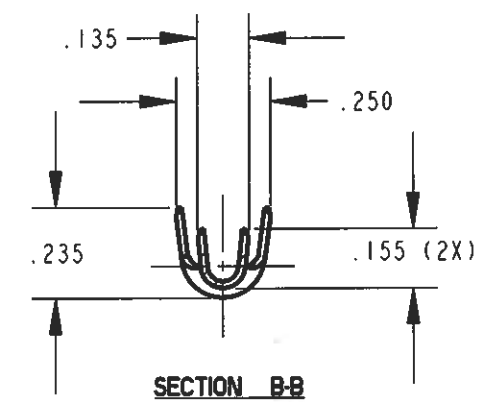
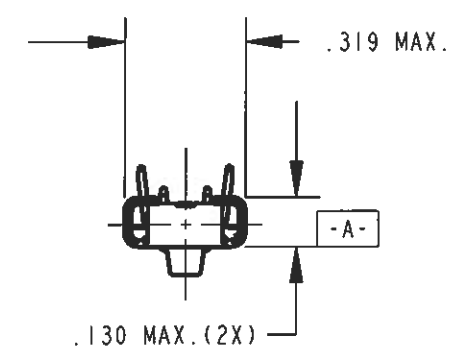
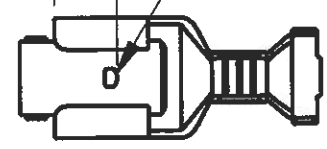
CUSTOMER DRAWING

P/N: 3000H 183A/

PART NUMBER	MATERIAL	FINISH	DIMPLE	PAPER INTERLEAVE
3000H 183A	.018 ±.001 THICK BRASS, C26000, R15T 84-87 PRETINNED PSC 1007	YES SEE MAT'L	YES	NO
3000H 183AB	.018 ±.001 THICK BRASS, C26000, R15T 84-87	NONE	YES	NO
3000H 183AK	.018 ±.001 THICK BRASS, C26000, R15T 84-87 PRETINNED PSC 1007	YES SEE MAT'L	YES	YES
3000H 183ABK	.018 ±.001 THICK BRASS, C26000, R15T 84-87	NONE	YES	YES
3000H 183A-3	.018 ±.001 THICK BRASS, C26000, R15T 84-87 PRETINNED PSC 1007	YES SEE MAT'L	NO	NO
3000H 183AB-3	.018 ±.001 THICK BRASS, C26000, R15T 84-87	NONE	NO	NO
3000H 183A-3K	.018 ±.001 THICK BRASS, C26000, R15T 84-87 PRETINNED PSC 1007	YES SEE MAT'L	NO	YES
3000H 183AB-3K	.018 ±.001 THICK BRASS, C26000, R15T 84-87	NONE	NO	YES



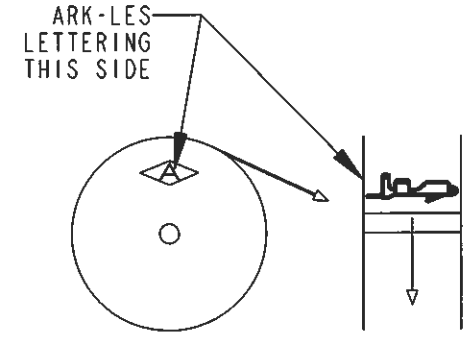
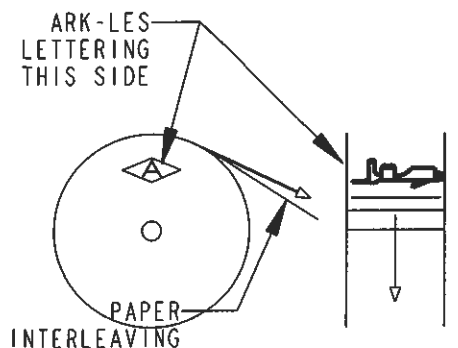
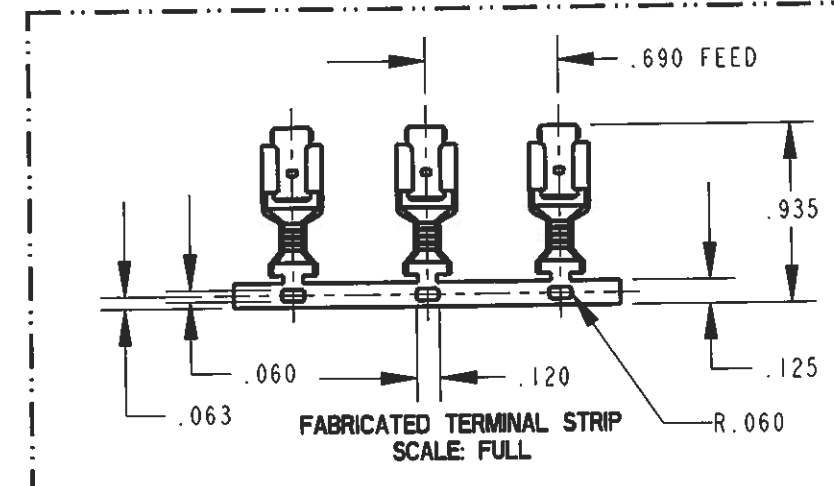
.163 WITH BLADE INSERTED.
DIMPLE FOR MATING WITH MALE BLADE. OPTIONAL. SEE TABLE.



ARK-LES UNCONTROLLED

NOTES:

1. TO ACCEPT A .250 X .032 MALE TAB.
2. TO ACCOMMODATE #22-#14 AWG GAUGE WIRE.
3. INSULATION DIAMETER RANGE: Ø.080 - .120.
4. RECOMMENDED WIRE STRIP LENGTH: 3/16 ± 1/32.
5. FOR PARTS WITH DIMPLE (I.E. 3000H 183A) FIRST INSERTION SHALL NOT EXCEED 15 LBS. AND FIRST WITHDRAWAL SHALL NOT BE LESS THAN 7 LBS. USE 3000M 68H-5 MALE TAB FOR TESTING.
6. FOR PARTS WITHOUT DIMPLE (I.E. 3000H 183A-3) FIRST INSERTION SHALL NOT EXCEED 15 LBS. AND FIRST WITHDRAWAL SHALL NOT BE LESS THAN 3.5 LBS. USE 3000M 68H-5 MALE TAB FOR TESTING.
7. FOR LOW FORCE TERMINALS WITHOUT DIMPLE (I.E. 3000H 183A-3LF) INSERTION/WITHDRAWAL FORCE SHALL NOT BE MEASURED, VERIFY THAT BEAM TOUCHES ONE RAIL MINIMUM.
8. FOR LOW FORCE TERMINALS ADD SUFFIX "LF" (I.E. 3000H 183A-3LF) TO PART NUMBER.
9. UNLESS OTHERWISE SPECIFIED, ALL RADII TO BE .015



STANDARD REELING WITH PAPER INTERLEAVING (I.E. 3000H 183AK)

STANDARD REELING (I.E. 3000H 183A)

PRINT DIST.	PROD. REL. ECR12570	RT 7/2/03	CHK'D
DEPT #	QUOTE REL.		DDP/2011
ENG	DRAWN BY D. O'NEILL	2/16/2011	APP.
SALES	SUPERSEDES DWG. DATED:	7/21/09	ET 525:11
STO	SCALE 2:1	DO NOT SCALE PRINT	
BAL	MATERIAL: SEE TABLE		
JZ	FINISH: SEE TABLE		
CHINA			
REV.	DESCRIPTION	DATE	DR.
L	REV/REDRW PER ECR # S000329	2/16/11	DON

ARK-LES CORPORATION STOUGHTON, MA

ORIGINAL IF RED

CUSTOMER DRAWING
TERMINAL, FEMALE LOCKING
.250 X .032, #22-#14 AWG

PART NAME

CAD#: 3000H_183A-REVL_CUST

P/N: 3000H 183A/

TOLERANCES UNLESS OTHERWISE SPECIFIED
 DECIMALS ±.010
 METRIC ±0.25mm
 ANGLES ±1°
 3RD ANGLE PROJECTION
 DWG SIZE B