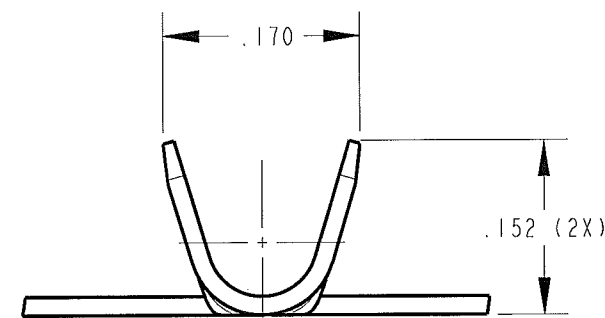
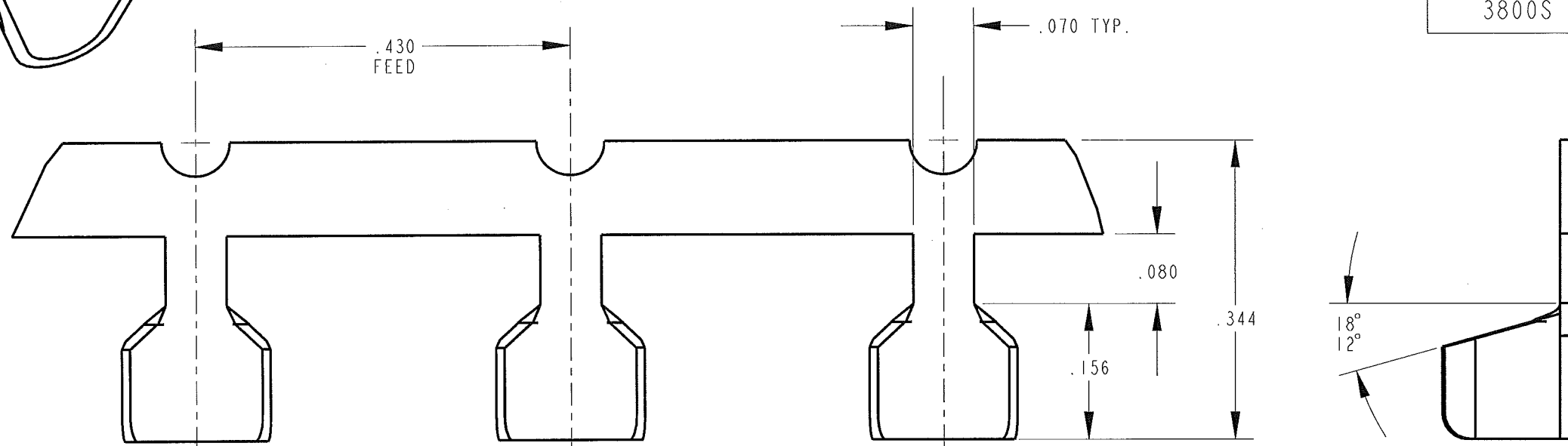


CUSTOMER DRAWING

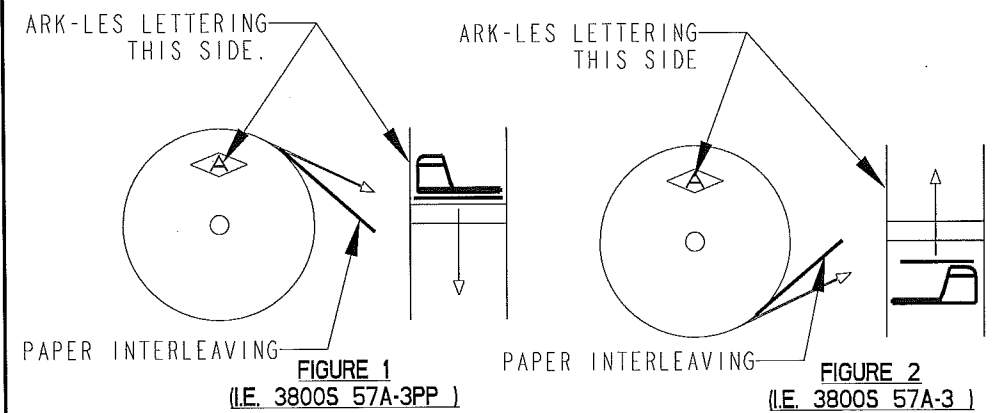
P/N: 3800S 57A/-3
REV U

PART NUMBER	MATERIAL	FINISH
3800S 57A-3	.016 THICK BRASS	PRETINNED
3800S 57AB-3	.016 THICK BRASS	NONE
3800S 57AN-3	.016 THICK BRASS	PRE-NICKEL



**ARK-LES
UNCONTROLLED**

- NOTES:
1. CMA RANGE: 1600-5000
 2. FOR PIGTAIL SPLICE USED IN BENCH APPLICATOR ADD SUFFIX "PP" TO PART NUMBER (I.E. 3800S 57A-3PP), SEE FIGURE 1 FOR REELING.
 3. FOR THROUGH SPLICES USED IN A BENCH APPLICATOR SEE FIGURE 2 FOR REELING.
 4. FOR PIGTAIL AND THROUGH SPLICES USED IN A SLIM-LINE AIR PRESS, SEE FIGURE 2 FOR REELING.
 5. SPLICES TO BE INTERLEAVED WITH .007 THICK KRAFT PAPER.



PRINT DIST.	PROD. REL. 95176	10/23/73	CHK'D	TOLERANCES UNLESS OTHERWISE SPECIFIED	 CORPORATION STOUGHTON, MA
DEPT #	QUOTE REL. 92128	5/24/73	DO'NEILL	DECIMALS ±.010	
ENG X	DRAWN BY D.O'NEILL 11/03/06		APP.	METRIC ±0.25mm	ORIGINAL IF RED PART NAME CUSTOMER DRAWING SPLICE TERMINAL
SALES	SUPERSEDES DWG. DATED: 8/15/95		ET 11/11/06	ANGLES ±1°	
STO X	SCALE 6:1		DO NOT SCALE PRINT	3RD ANGLE PROJECTION	CAD#: 3800S_57A-3-REVU_CUST P/N: 3800S 57A/-3
RAL	MATERIAL: SEE TABLE		FINISH: SEE TABLE	DWG SIZE: B	
U	REV/REDRWN ECR# S000127	11/03/06	DON		REV U
REV.	DESCRIPTION	DATE	DR.		