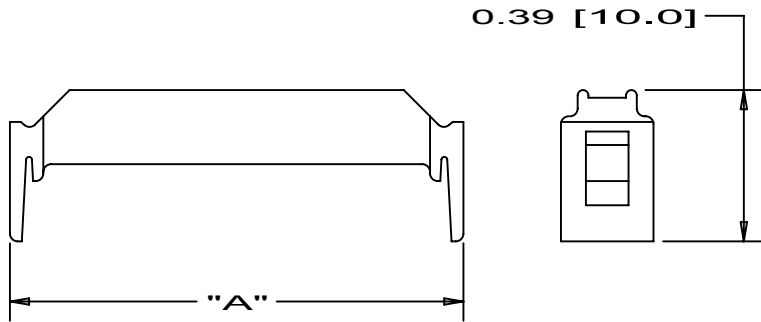
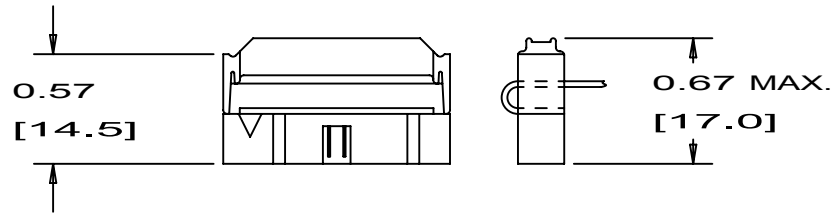
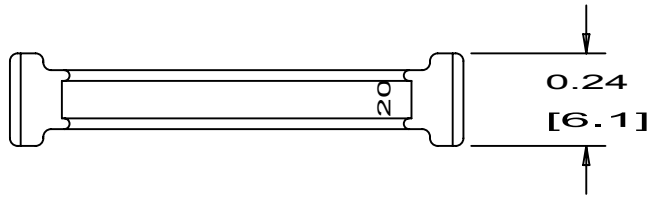


THIS COPY IS PROVIDED ON A RESTRICTED BASIS AND IS NOT TO BE USED IN ANY WAY DETRIMENTAL TO THE INTERESTS OF PANCON.



NO. OF CIRCUITS	PART NUMBER	DIM. "A"	WT./10 PCS. LBS. GRAMS
10	050-000-010	.68 (17.3)	.011 (4.8)
14	050-000-014	.88 (22.4)	.013 (6.3)
16	050-000-016	.98 (24.9)	.015 (6.9)
20	050-000-020	1.18 (30.0)	.017 (7.8)
26	050-000-026	1.48 (37.6)	.021 (9.7)
34	050-000-034	1.88 (47.8)	.026 (12.1)
40	050-000-040	2.18 (55.4)	.031 (14.0)
50	050-000-050	2.68 (68.1)	.036 (16.6)
60	050-000-060	3.18 (80.8)	.042 (19.3)
64	050-000-064	3.38 (86.1)	.046 (21.0)

NOTES:

- HOUSING MATERIAL: GLASS-FILLED POLYESTER, U.L. 94V-0
- ALL DIMENSIONS ARE SHOWN IN INCHES AND [MILLIMETERS]
- STANDARD PART COLOR IS GRAY



PANCON
CONNECTORS
www.pancon.de / GERMANY
www.panconconnectors.com / USA

Bolingbrook, Illinois

TM
LAT-CON SOCKET STRAIN RELIEF

UNLESS OTHERWISE SPECIFIED,
DIMENSIONAL TOLERANCES ARE:
(.X) ± (.XXX) ±
(.XX) ± .02 (ANGLES) ±

UNLESS OTHERWISE SPECIFIED, ALL DIMENSIONS ARE GIVEN IN INCHES.
THIRD ANGLE PROJECTION.
SCALE
2:1

DRAWN BY
DDU

DATE
4-8-86

CHK'D
WJH

SEE NOTES

DRAWING NO.
KA-10246

DWG.
A
SIZE

REV	DATE	BY	CHK	DESCRIPTION	CN - R	CUST	SUP
12		KI		Added RoHS Compliant	2162		