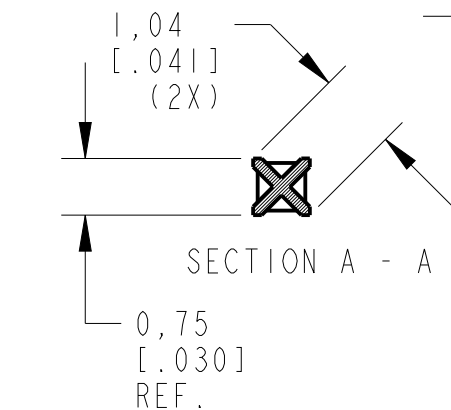
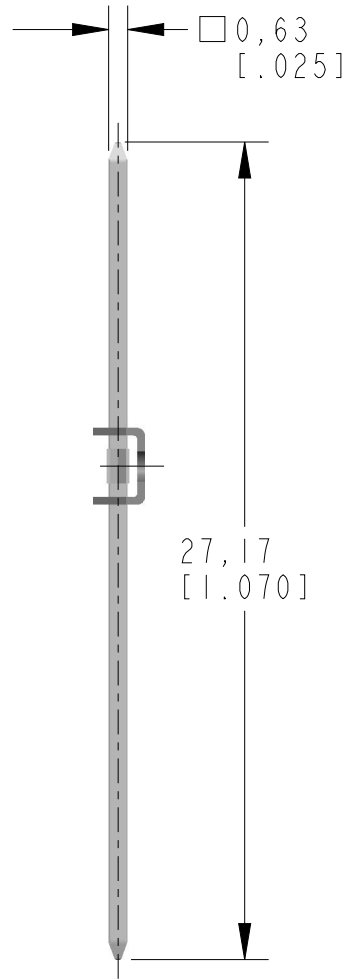
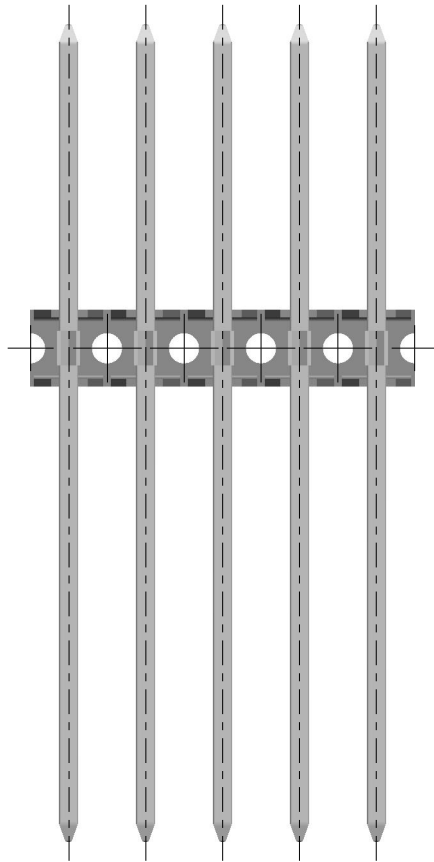
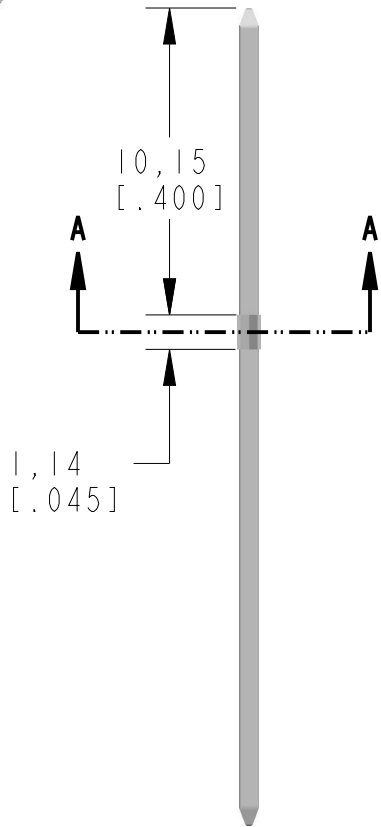
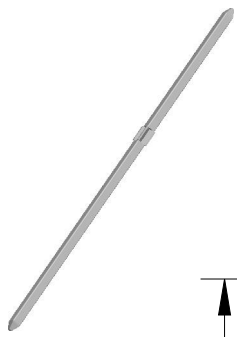


# TERMINAL, COMPLIANT PIN

MATERIAL: PIN - COPPER ALLOY  
BANDOLIER - C.R. STEEL OR  
COPPER ALLOY

PLATING - TBD BY CUSTOMER

DIMENSIONS IN MM [INCHES]



2,54  
[.100]  
PITCH



DWG: 8000T 120