



TERMINAL, COMPLIANT

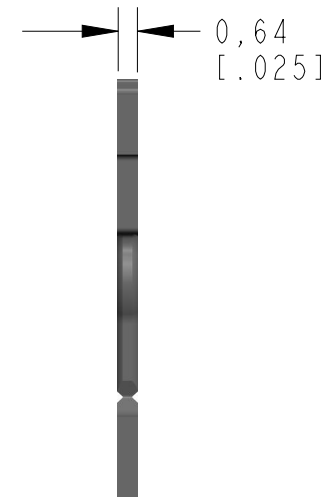
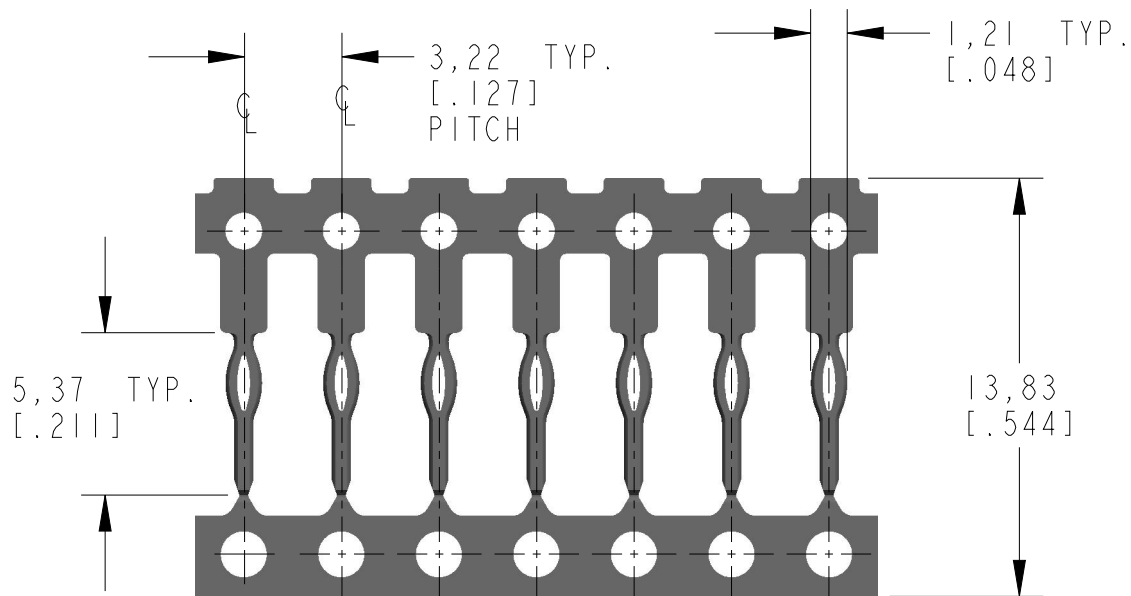
MATERIAL : PHOS. BRONZE

PLATING: TBD BY CUSTOMER

ACCOMODATES PLATED THRU HOLE SIZES:

$\varnothing 0.94\text{mm}$ [.037], $\varnothing 1.00\text{mm}$ [.039], $\varnothing 1.09\text{mm}$ [.043]

DIMENSIONS IN MM [INCHES]



FABRICATION STRIP